



The actin-capping protein CapG localizes to microtubule-dependent organelles during the cell cycle

Thomas Hubert¹, Katrien Van Impe¹, Joël Vandekerckhove, Jan Gettemans^{*}

Department of Medical Protein Research, VIB, B-9000 Ghent, Belgium

Department of Biochemistry, Ghent University, Faculty of Medicine and Health Sciences, Albert Baertsoenkaai 3, B-9000 Ghent, Belgium

ARTICLE INFO

Article history:

Received 9 January 2009

Available online 21 January 2009

Keywords:

Cell cycle

CapG

Nup62

Centrosome

Midbody ring

Mitotic spindle

ABSTRACT

Extensive cross-talk between the actin and the microtubule cytoskeletons has been reported. Especially in mitosis, processes dependent on actin- and microtubule-based structures alternate and regulate each other in a complex cascade leading to division into two daughter cells. Here, we have studied the subcellular localization of the filamentous actin-capping protein CapG. Fluorescence microscopy of endogenous CapG and EGFP-tagged CapG revealed CapG localization at the mother centriole in interphase, the mitotic spindle in mitosis and the midbody ring in abscission. Surprisingly, nucleoporin Nup62, an interaction partner of CapG, also localized to the midbody ring at the end of abscission and colocalized with CapG. We propose a role for the actin-binding protein CapG as a mediator of cross-talk between the actin cytoskeleton and microtubule-based organelles that regulate cell division.

© 2009 Elsevier Inc. All rights reserved.

Processes that require cellular asymmetry such as cell motility, neuronal pathfinding, wound healing and cell division involve cross-talk between the actin and microtubule cytoskeletons [1]. Interaction between the two cytoskeletons is structural or regulatory. Interactions are classified as structural when actin and microtubules are physically linked. Regulatory interactions are those that involve proteins such as Rho family GTPases which transmit signals between actin and microtubules. Various organelles, such as the centrosome, the mitotic spindle and the midbody, use microtubules as a structural constituent. Interactions between the actin cytoskeleton and microtubule-dependent organelles can also be classified structurally or regulatory. Mitotic spindle mediated regulation of the actomyosin contractile ring and F-actin mediated transport of the centrosomes prior to mitosis are examples of regulatory and structural interactions, respectively.

The microtubule cytoskeleton is required to maintain the polarized distribution of actin-dependent protrusions at the leading edge of migrating fibroblasts [2]. It has been suggested that microtubule growth at the leading edge could promote local activity of Rac in the cell front to drive lamellipodial protrusion [3]. Conversely, microtubule depolymerization behind the lamellium could activate RhoA to drive actomyosin contraction [4]. Thus, the actin

cytoskeleton provides force-generating structures to extend the cell front, whereas the microtubule cytoskeleton coordinates these actin-based structures in migrating cells. In addition, microtubules coordinate focal adhesion disassembly in migrating cells [5].

Centrosome reorientation in migrating cells is coupled to the capture of microtubule + ends to the actin cortex by Cdc42 and cytoplasmic Dynein [6]. At the onset of mitosis, filamentous actin and myosin II have been shown to provide the force required to separate centrosomes and drive them to opposite ends of the nucleus [7]. The attachment of F-actin to the centrosome is mediated by cortactin [7]. Correct positioning of centrosomes is necessary to initiate and correctly form the spindle. Proper spindle orientation is also mediated by interaction between microtubules and cortical actin [8]. Thereafter, the mitotic spindle controls the precise localization of the contractile actomyosin ring to form the cleavage furrow in the plasma membrane [1]. Disruption of the spindle before formation of the actomyosin ring inhibits formation of this organelle and prevents furrow ingression in cytokinesis [9]. Following cytokinesis, the midbody, a microtubule-dependent organelle, performs abscission, the process by which daughter cells become physically separated. Separation of daughter cells occurs when exocytotic vesicles fuse with the plasma membrane in the midbody at a special structure called the midbody ring [10]. It has been suggested that the contractile ring and the midbody ring, which are distinct organelles with markedly different characteristics, are nonetheless templated at the same time [11].

CapG is an actin filament capping protein of the Gelsolin family [12]. Its capping activity is activated by calcium and inhibited by

^{*} Corresponding author. Address: Department of Medical Protein Research, VIB, Ghent University, Faculty of Medicine and Health Sciences, Albert Baertsoenkaai 3, B-9000 Ghent, Belgium. Fax: +32 9 2649490.

E-mail address: jan.gettemans@ugent.be (J. Gettemans).

¹ These authors contributed equally to this work.

membrane polyphosphoinositides but unlike Gelsolin, CapG does not sever actin filaments [12]. CapG also localizes in the nucleus and we recently showed that CapG is imported in the nucleus by the transport receptor NTF2, Ran GTPase and nucleoporin Nup62 [13,14]. In the nucleus, CapG is actively transported to transcriptionally active nucleoli [15]. Here, we present evidence that CapG might mediate cross-talk between the actin cytoskeleton and microtubule-based organelles involved in mitosis.

Materials and methods

Reagents. Thymidine, saponin, nocodazole and 4,6-diamidino-2-phenylindole (DAPI) were obtained from Sigma–Aldrich (St. Louis, USA). Digitonin was from Calbiochem (Darmstadt, Germany).

Plasmids, recombinant proteins and antibodies. CapG cDNA was subcloned in the pEGFP-N1 vector (Clontech-Takara Bio Europe, St-Germain-en-Laye, France). CapG was also subcloned in the pcDNA6-myc-His vector (Invitrogen, Merelbeke, Belgium). Purification of Myc-CapG-V5-His₆ is described by Van Impe et al. [13]. Rabbit polyclonal anti-CapG antibody was affinity purified [16]. Mouse monoclonal anti-V5 antibody was obtained from Invitrogen. Alexa 488-conjugated goat anti-rabbit antibody and Alexa 594-conjugated goat anti-mouse antibody were from Molecular Probes (Invitrogen, Merelbeke, Belgium). Mouse monoclonal anti-Acetylated tubulin antibody, mouse monoclonal anti ϵ -tubulin antibody, mouse monoclonal anti γ -tubulin antibody and mouse monoclonal anti α -tubulin antibody were from Sigma–Aldrich. Mouse anti-Ran antibody and mouse anti-Nup62 antibody were from BD Biosciences (Erembodegem, Belgium).

Cell culture and cell processing. HeLa, MDCK-AZ and HEK293T cells were maintained at 37 °C in a humidified 10% CO₂ incubator and grown in DMEM (Gibco) supplemented with 10% fetal bovine serum, 100 μ g/ml streptomycin and 100 IU/ml penicillin. HeLa cells were transiently transfected using lipofectamine reagent (Invitrogen) according to the manufacturer's instructions. HEK293T cells, seeded on rat tail collagen-coated coverslips, were transfected using calcium phosphate. For thymidine treatment, HEK293T cells were plated on collagen-coated coverslips, allowed to recover for 24 h and stimulated with 2 mM thymidine in DMEM for 13 h, followed by 11 h incubation in fresh medium before processing for immunofluorescence microscopy. In the microtubule regrowth assay, HEK293T cells were plated on collagen-coated coverslips, allowed to recover for 24 h and treated with 10 μ g/ml nocodazole for 2 h at 37 °C to depolymerize microtubules. Cells were then allowed to recover in fresh medium for 15 min to polymerize new microtubules. For saponin extraction, HEK293T cells were plated on collagen-coated coverslips, allowed to recover for 24 h and treated with 0.02% saponin in PHEM buffer (60 mM PIPES, 25 mM HEPES, 10 mM EGTA, 2 mM MgCl₂, 0.02% BSA, pH 6.9) for 5 min at 37 °C. Cells were then fixed in 100% methanol at –20 °C for 6 min. For cell permeabilization with digitonin, MDCK-AZ cells were grown on glass coverslips for 48 h. Cells were washed in binding buffer (20 mM Hepes pH 7.3, 110 mM potassium acetate, 5 mM sodium acetate, 2 mM magnesium acetate, 2 mM DTT, 0.5 mM EGTA and protease inhibitors) and then treated with digitonin (20 μ g/ml) for 4 min on ice. After permeabilization, the cells were washed twice with binding buffer and inverted on top of 50 μ l import reaction mix containing 4 μ M myc-CapG-V5-His and an energy-regenerating mixture (1 mM ATP, 0.1 mM GTP, 5 mM creatine phosphate and 20 U/ml creatine phosphokinase) and incubated at 30 °C for 30 min. Cells were washed twice in binding buffer and further processed for immunofluorescence microscopy.

Immunostaining and immunofluorescence microscopy. Cells were washed with PBS, fixed with 3% paraformaldehyde for 20 min at

room temperature and permeabilized with 0.2% Triton X-100 in PBS for 5 min. Paraformaldehyde was neutralized with 0.75% glycine for 20 min. Alternatively, cells were fixed and permeabilized by a 6 min incubation in 100% methanol at –20 °C. Cells were then blocked in 1% BSA in PBS for 30 min and incubated with primary antibody for 1 h at 37 °C. Cells were washed in PBS, then incubated with secondary antibody and 4,6-diamidino-2-phenylindole (DAPI) for 30 min at room temperature. Cells were first stained with rabbit primary antibody, thereafter with mouse primary antibody. Following immunostaining, samples were analyzed using a Carl Zeiss Axiovert 200 M Apotome epifluorescence microscope (63 \times 1.4NA oil objective) equipped with an Axiocam cooled CCD camera and processed using Axiovision software (Zeiss, Göttingen, Germany).

Results and discussion

CapG localizes to the centrosome during interphase

In a previous study, we reported that CapG interacts with Ran, a major regulator of nucleo-cytoplasmic protein transport, and this interaction is necessary for nuclear import of CapG [14]. We also demonstrated that Ran can accompany CapG in the nucleolus [15]. In addition, Ran localizes to the centrosome [17]. Therefore, we hypothesized that CapG possibly acts in concert with Ran at the centrosome. Reminiscent of many centrosomal proteins, Ran localization at the centrosome can only be visualized in methanol-fixed cultured cells [17]. Analysis of the subcellular localization of endogenous CapG revealed that CapG localized to the centrosome of methanol- but not paraformaldehyde-fixed HEK293T cells (Fig. 1A, second panels). γ -Tubulin is a marker for both centriole bodies. CapG only localized to one of both centrioles, in contrast to Ran which localizes to both centriole bodies (Fig. 1A, left panels). To determine to which centriole CapG localizes, we stained HEK293T cells for ϵ -tubulin, a marker for the appendages of the mother centriole, and acetylated tubulin, which stains the primary cilium that only grows on the appendages of the mother centriole (Fig. 1A, right panels) [18,19]. These stainings revealed that CapG specifically localized to the appendages of the mother centriole. To further confirm that CapG localized to the appendages, we performed a microtubule regrowth assay (Fig. 1B). The newly polymerized microtubules seemed attached to a ring-shaped CapG staining, indicating that CapG indeed localized to the appendages of the mother centriole (Fig. 1B). We also analyzed the localization of EGFP-tagged CapG in γ -tubulin-stained HEK293T cells (Fig. 1C). CapG-EGFP localized to the centrosome, supporting the previous results. Strikingly, CapG-EGFP localized to both centriole bodies and completely overlapped with γ -tubulin (Fig. 1C). Possibly, addition of the EGFP tag perturbs the exact position of CapG at the centrosome. Alternatively, excess CapG accumulates at a transient location during transit to the appendages of the mother centriole. Thus, increased expression of CapG could shift the balance between a transient and a more stable location at the centrosome. The reported interaction between CapG and Ran could account for this observation since Ran also localizes to both centriole bodies. Ran has already been shown to assist CapG import into the nucleus and CapG transport to the nucleolus [14,15]. In this perspective, we can hypothesize that Ran also recruits CapG to the centriole bodies prior to further transport to the appendages of the mother centriole.

The localization of endogenous CapG at the centrosome persisted until the onset of mitosis in prophase. Subsequently, CapG relocated to the mitotic cytoplasm (supplementary data, Figs. S1 and S2). CapG reappeared at the centrosome in abscission at the end of cytokinesis, simultaneously at both connected daughter cells (Fig. 1D and supplementary data, Fig. S2). Interestingly, CapG

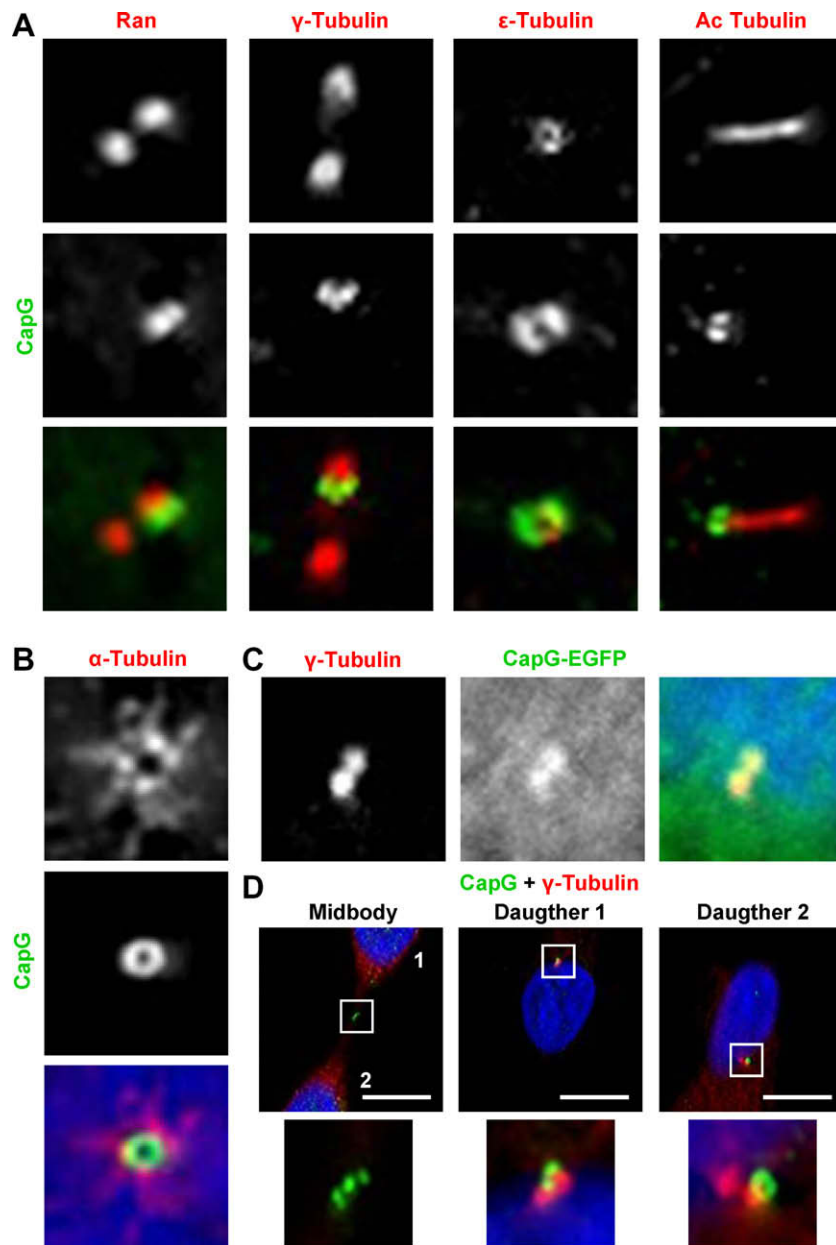


Fig. 1. Endogenous CapG localizes to the mother centriole of the centrosome during interphase. (A) CapG localization relative to markers for the centrosome (Ran, γ -tubulin) and the appendages of the mother centriole (ϵ -tubulin, acetylated tubulin staining of the primary cilium) in interphase HEK293T cells. (B) Microtubule regrowth assay showing CapG at the appendages of the mother centriole where newly polymerized microtubules (α -tubulin) are anchored. (C) CapG-EGFP localizes to the centrosome in interphase HEK293T cells. (D) Endogenous CapG and γ -tubulin staining of two daughter cells still connected by a midbody in abscission. CapG relocates to the centrosome and the midbody ring. Scale bars, 10 μ m.

also appeared at a structure in the middle of the midbody resembling the midbody ring (Fig. 1D and [supplementary data, Figs. S1–S3](#)) [10]. In line with this observation, the centrosome has been shown to participate in abscission and many centrosomal proteins have been found to localize to the midbody ring as well [20–22].

CapG localizes to the midbody ring in abscission

To confirm the localization of CapG at the midbody ring, we stained methanol-fixed HeLa cells for α -tubulin, a marker for the midbody [10,11] (Fig. 2, left panels and [supplementary data, Fig. S1](#)). In the center of the midbody, at the midbody ring, microtubules interdigitate so that no α -tubulin-staining is visible in this portion of the midbody [10]. CapG indeed localized in a space in

the centre of the midbody where the midbody ring is located (Fig. 2, left panels). Similar to α -tubulin, Ran stained the midbody with the exception of the midbody ring (Fig. 2, second panels). Strikingly, we also noticed that Nup62, another interaction partner of CapG, localized at the midbody ring (Fig. 2, third panels) [14]. At the beginning of abscission, CapG but not Nup62 localized at the midbody ring ([supplementary data, Fig. S3](#)). Then, just before completion of abscission, Nup62 appeared at the midbody ring and colocalized with CapG (Fig. 2, third panels and [supplementary data, Fig. S3](#)). Upon thymidine treatment to synchronize cells, Nup62 but not CapG relocated to a structure perpendicular to the midbody ring, indicating a possible transient localization for Nup62 on its way to the midbody ring (Fig. 2, right panels). In this way, CapG and Nup62 stainings could be separated, suggesting an alternative

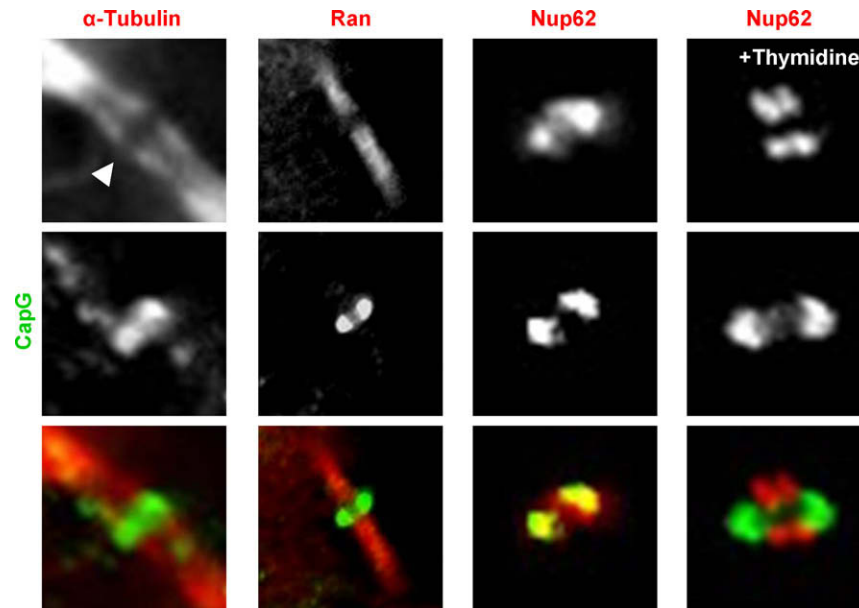


Fig. 2. Endogenous CapG localizes to the midbody ring in abscission. CapG localizes to the midbody where microtubules (α -tubulin) from each side of the midbody interdigitate (arrowhead, dark area in the middle of the midbody, first panels). Similarly to α -tubulin, Ran localizes to the midbody with the exception of the midbody ring (second panels). Nup62 localizes to the midbody ring and colocalizes with CapG (third panels). After thymidine treatment to synchronize cells, Nup62 but not CapG relocates to a structure perpendicular to the midbody ring (last panels).

transport pathway to the midbody ring. Following thymidine treatment, the Nup62 staining pattern consisted of two pairs of dots that fit the fork-shaped α -tubulin structures at each side of the midbody ring (Fig. 2, first and last panels) [10]. Since thymidine is used to block cell cycle progression, it may not be surprising that thymidine influences the localization of cell cycle regulating proteins.

To confirm the endogenous CapG staining, we observed that expressed CapG-EGFP also localized to the midbody ring (data not shown). The presence of CapG at the midbody may not be entirely unexpected because a proteome study of the midbody identified

no less than 29% of all candidate midbody proteins as actin-binding proteins [23]. However, it is puzzling to find so many actin-binding proteins at the midbody since no actin structures have yet been uncovered at this typical microtubule-based organelle. By contrast, it is quite remarkable to detect Nup62 at the midbody ring just before completion of abscission. In recent years, nucleoporins have been shown to perform a great variety of alternative functions, apparently unrelated to nuclear pore functioning, both in resting as well as in dividing cells [24–26]. Our preliminary data indicate that Nup62 probably functions at the midbody ring in the exocytosis pathway. This may explain why Nup62 is targeted to the mid-

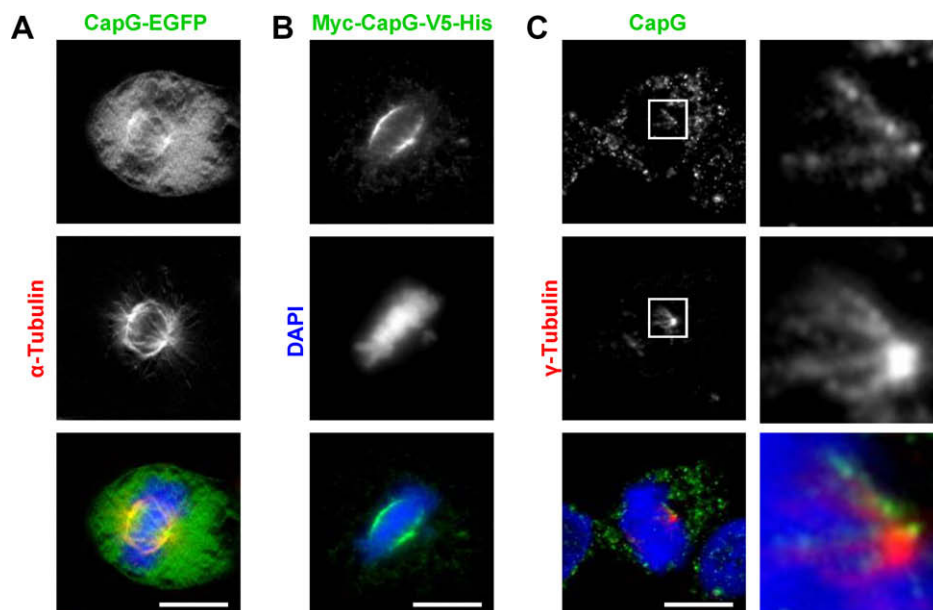


Fig. 3. CapG localizes to the mitotic spindle. (A) Localization of CapG-EGFP to the mitotic spindle (α -tubulin) in metaphase HEK293T cells. (B) Association of recombinant Myc-CapG-V5-His with the mitotic spindle in digitonin-permeabilized MDCK cells. (C) Endogenous CapG localizes to the mitotic spindle in HEK293T cells extracted with saponin and fixed with methanol. Scale bars, 10 μ m.

body ring in a late stage in abscission since fusion of exocytotic vesicles with the plasma membrane is the very last step in abscission. Exocytosis is mediated by the exocyst complex. Recent evidence indicates that Nup62 is recruited by Exo70, a component of the exocyst, at the leading edge of migrating cells, where it performs a function essential for cell migration [27].

CapG localizes at the mitotic spindle

In mitosis, CapG-EGFP localized at the mitotic spindle, another microtubule-based organelle involved in cell division (Fig. 3A). Recombinant CapG also decorated the mitotic spindle when added to digitonin-permeabilized MDCK-AZ cells, further strengthening this observation (Fig. 3B). Endogenous CapG poorly stained the spindle in formaldehyde-fixed cells but when cells were first extracted with saponin to remove excess cytoplasmic proteins and subsequently fixed with methanol, a small CapG pool was visible at the mitotic spindle, indicating that this localization is specific and not the result of overexpression or addition of recombinant CapG (Fig. 3C). Although filamentous actin has been found to localize at the mitotic spindle, no clear function for this actin pool has been established [28]. However, anti-F-actin and anti-myosin drugs block microtubule dynamics at the metaphase kinetochore, suggesting an important role for F-actin at the spindle [28]. In oocytes, it has been shown that the actin cytoskeleton is responsible for targeting chromosomes to the mitotic spindle [29]. In this perspective, CapG might modulate actin dynamics at the mitotic spindle, as well as at the centrosome and at the midbody. The observed dynamics of CapG localization (schematized in Fig. S4, supplementary data) correlates well with the results of a genome-wide study showing that CapG and numerous other actin-binding protein transcripts are upregulated prior to the onset of mitosis [30]. Indeed, as mitosis proceeds, the need for cytoskeleton-regulating proteins changes. Some structures, such as the lamellipodia, disappear while others, such as the spindle poles, emerge, requiring an adapted response in the repertoire of actin-binding protein expression and localization.

Acknowledgments

This work was supported by the Concerted Actions Program of Ghent University (GOA), the Human Frontier Science Program (HFSP), the IUAP, the Fund for Scientific Research-Flanders (FWO-Vlaanderen) and the Foundation against Cancer (Belgium).

Appendix A. Supplementary data

Supplementary data associated with this article can be found, in the online version, at [doi:10.1016/j.bbrc.2009.01.064](https://doi.org/10.1016/j.bbrc.2009.01.064).

References

- [1] O.C. Rodriguez, A.W. Schaefer, C.A. Mandato, P. Forscher, W.M. Bement, C.M. Waterman-Storer, Conserved microtubule-actin interactions in cell movement and morphogenesis, *Nat. Cell Biol.* 5 (2003) 599–609.
- [2] J.M. Vasiliev, I.M. Gelfand, L.V. Domnina, O.Y. Ivanova, S.G. Komm, L.V. Olshevskaja, Effect of colcemid on the locomotory behaviour of fibroblasts, *J. Embryol. Exp. Morphol.* 24 (1970) 625–640.
- [3] C.M. Waterman-Storer, R.A. Worthylake, B.P. Liu, K. Burridge, E.D. Salmon, Microtubule growth activates Rac1 to promote lamellipodial protrusion in fibroblasts, *Nat. Cell Biol.* 1 (1999) 45–50.
- [4] X.D. Ren, W.B. Kiosses, M.A. Schwartz, Regulation of the small GTP-binding protein Rho by cell adhesion and the cytoskeleton, *EMBO J.* 18 (1999) 578–585.
- [5] J.A. Broussard, D.J. Webb, I. Kaverina, Asymmetric focal adhesion disassembly in motile cells, *Curr. Opin. Cell Biol.* 20 (2008) 85–90.
- [6] G.G. Gundersen, Evolutionary conservation of microtubule-capture mechanisms, *Nat. Rev. Mol. Cell Biol.* 3 (2002) 296–304.
- [7] W. Wang, L. Chen, Y. Ding, J. Jin, K. Liao, Centrosome separation driven by actin-microfilaments during mitosis is mediated by centrosome-associated tyrosine-phosphorylated cortactin, *J. Cell Sci.* 121 (2008) 1334–1343.
- [8] B.M. McCartney, D.G. McEwen, E. Grevengoed, P. Maddox, A. Bejsovec, M. Peifer, *Drosophila* APC2 and Armadillo participate in tethering mitotic spindles to cortical actin, *Nat. Cell Biol.* 3 (2001) 933–938.
- [9] Y. Hiramoto, Cell division without mitotic apparatus in sea urchin eggs, *Exp. Cell Res.* 11 (1956) 630–636.
- [10] A. Gromley, C. Yeaman, J. Rosa, S. Redick, C.T. Chen, S. Mirabelle, M. Guha, J. Sillibourne, S.J. Doxsey, Centriolin anchoring of exocyst and SNARE complexes at the midbody is required for secretory-vesicle-mediated abscission, *Cell* 123 (2005) 75–87.
- [11] D.G. von Dassow, W.M. Bement, A ring-like template for abscission, *Dev. Cell* 9 (2005) 578–580.
- [12] F.X. Yu, P.A. Johnston, T.C. Sudhof, H.L. Yin, gCap39, a calcium ion- and polyphosphoinositide-regulated actin capping protein, *Science* 250 (1990) 1413–1415.
- [13] K. Van Impe, V. De Corte, L. Eichinger, E. Bruyneel, M. Mareel, J. Vandekerckhove, J. Gettemans, The nucleocytoplasmic actin-binding protein CapG lacks a nuclear export sequence present in structurally related proteins, *J. Biol. Chem.* 278 (2003) 17945–17952.
- [14] K. Van Impe, T. Hubert, V. De Corte, B. Vanloo, C. Boucherie, J. Vandekerckhove, J. Gettemans, A new role for nuclear transport factor 2 and Ran: nuclear import of CapG, *Traffic* 9 (2008) 695–707.
- [15] T. Hubert, K. Van Impe, J. Vandekerckhove, J. Gettemans, The F-actin filament capping protein CapG is a bona fide nucleolar protein, *Biochem. Biophys. Res. Commun.* 377 (2008) 699–704.
- [16] V. De Corte, K. Van Impe, E. Bruyneel, C. Boucherie, M. Mareel, J. Vandekerckhove, J. Gettemans, Increased importin-beta-dependent nuclear import of the actin modulating protein CapG promotes cell invasion, *J. Cell Sci.* 117 (2004) 5283–5292.
- [17] G. Keryer, B. Di Fiore, C. Celati, K.F. Lechtreck, M. Mogensen, A. Delouvee, P. Lavia, M. Bornens, A.M. Tassin, Part of Ran is associated with AKAP450 at the centrosome: involvement in microtubule-organizing activity, *Mol. Biol. Cell* 14 (2003) 4260–4271.
- [18] P. Chang, T.H. Giddings Jr., M. Winey, T. Stearns, Epsilon-tubulin is required for centriole duplication and microtubule organization, *Nat. Cell Biol.* 5 (2003) 71–76.
- [19] V. Singla, J.F. Reiter, The primary cilium as the cell's antenna: signaling at a sensory organelle, *Science* 313 (2006) 629–633.
- [20] M. Fabbro, B.B. Zhou, M. Takahashi, B. Sarcevic, P. Lal, M.E. Graham, B.G. Gabrielli, P.J. Robinson, E.A. Nigg, Y. Ono, K.K. Khanna, Cdk1/Erk2- and Plk1-dependent phosphorylation of a centrosome protein, Cep55, is required for its recruitment to midbody and cytokinesis, *Dev. Cell* 9 (2005) 477–488.
- [21] A. Gromley, A. Jurczyk, J. Sillibourne, E. Halilovic, M. Mogensen, I. Groisman, M. Blomberg, S. Doxsey, A novel human protein of the maternal centriole is required for the final stages of cytokinesis and entry into S phase, *J. Cell Biol.* 161 (2003) 535–545.
- [22] M. Piel, J. Nordberg, U. Euteneuer, M. Bornens, Centrosome-dependent exit of cytokinesis in animal cells, *Science* 291 (2001) 1550–1553.
- [23] A.R. Skop, H. Liu, J. Yates III, B.J. Meyer, R. Heald, Dissection of the mammalian midbody proteome reveals conserved cytokinesis mechanisms, *Science* 305 (2004) 61–66.
- [24] M.M. Dawlaty, L. Malureanu, K.B. Jeganathan, E. Kao, C. Sustmann, S. Tahk, K. Shuai, R. Grosschedl, J.M. van Deursen, Resolution of sister centromeres requires RanBP2-mediated SUMOylation of topoisomerase IIalpha, *Cell* 133 (2008) 103–115.
- [25] K.B. Jeganathan, L. Malureanu, J.M. van Deursen, The Rae1-Nup98 complex prevents aneuploidy by inhibiting securin degradation, *Nature* 438 (2005) 1036–1039.
- [26] M. Zuccolo, A. Alves, V. Galy, S. Bolhy, E. Formstecher, V. Racine, J.B. Sibarita, T. Fukagawa, R. Shiekhattar, T. Yen, V. Doye, The human Nup107-160 nuclear pore subcomplex contributes to proper kinetochore functions, *EMBO J.* 26 (2007) 1853–1864.
- [27] T. Hubert, J. Vandekerckhove, J. Gettemans, Exo70-mediated recruitment of nucleoporin Nup62 at the leading edge of migrating cells is necessary for cell migration, submitted for publication.
- [28] R.V. Silverman-Gavrila, A. Forer, Evidence that actin and myosin are involved in the poleward flux of tubulin in metaphase kinetochore microtubules of crane-fly spermatocytes, *J. Cell Sci.* 113 (Pt 4) (2000) 597–609.
- [29] P. Lenart, C.P. Bacher, N. Daigle, A.R. Hand, R. Eils, M. Terasaki, J. Ellenberg, A contractile nuclear actin network drives chromosome congression in oocytes, *Nature* 436 (2005) 812–818.
- [30] R.J. Cho, M. Huang, M.J. Campbell, H. Dong, L. Steinmetz, L. Sapinoso, G. Hampton, S.J. Elledge, R.W. Davis, D.J. Lockhart, Transcriptional regulation and function during the human cell cycle, *Nat. Genet.* 27 (2001) 48–54.